

4 Palace Street, Caernarfon, LL55 1RR.

AR OSOD / TO LET

Arwynebeddau mewnol a rhenti / Net internal areas and rents:

Swyddfa Ar Ddwy Lawr 4 Stryd Plas / Office On Two Floors 4 Palace Street



Siop/Shop

Llawr cyntaf ac Ail Lawr / First and Second Floor

CYFANSWM / TOTAL 91m²

	Arwynebedd Area	Rhent Blynnyddol Annual Rent	Misol Monthly	Wythnosol Weekly
Swyddfaeudd	91m ²	£5,280.00	£440.00	£101.54

Bydd tenantiaid yn gyfrifol am eu gorbenion, yn cynnwys trydan, dwr, trethi ayyb, hefyd canran o yswiriant yr adeilad. Hefyd canran o gostau cynhaliath offer tan, offer trydanol, trydan i fannau cyfrannol a paentio allanol sydd yn daladwy fel Costau Gwasaneth misol. Gosodir ar les atgyweirio mewnol.

Tenants are responsible for their own overheads i.e. electircity, water, rates...etc. plus percentage of the building insurance. Also a percentage of the maintenance of fire systems, electrical systems, electricity to common parts and external decoration, payable as a monthly Service Charge. Premises will be let on an internal repairing lease basis.

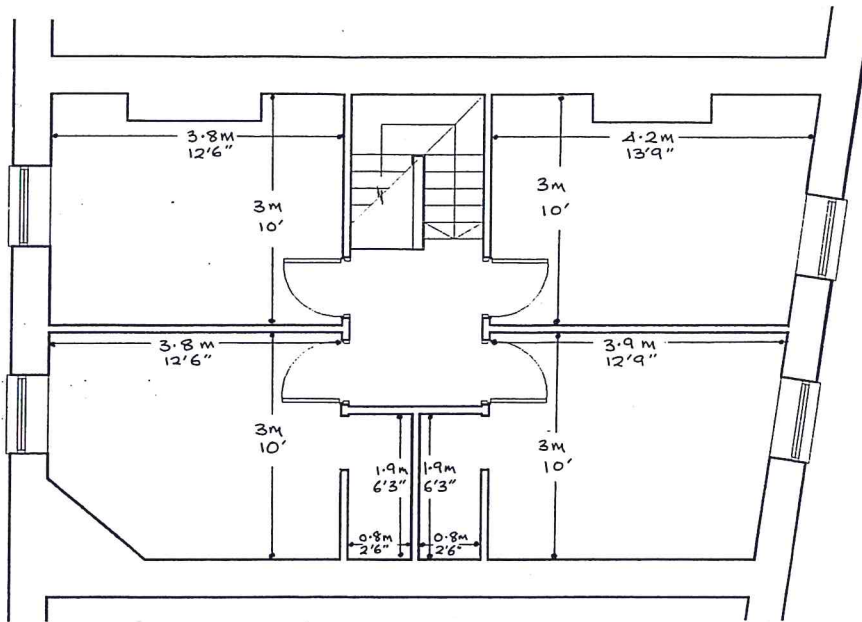


Galeri, Doc Victoria, Caernarfon, Gwynedd LL55 1SQ

T: 01286 685 250

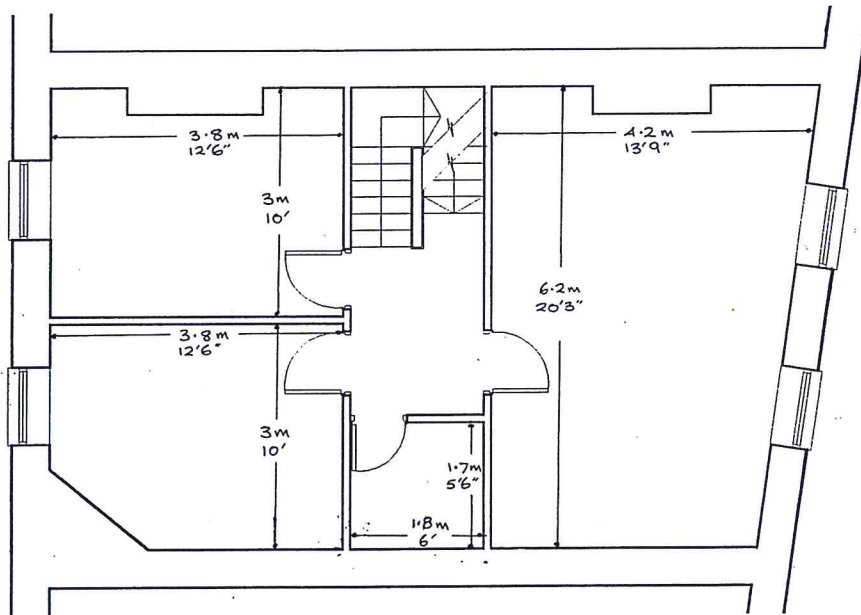
E: post@galericaernarfon.com

www.galericaernarfon.com



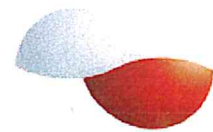
AIL LAWYR

SECOND FLOOR



LLAWYR CYNIAF

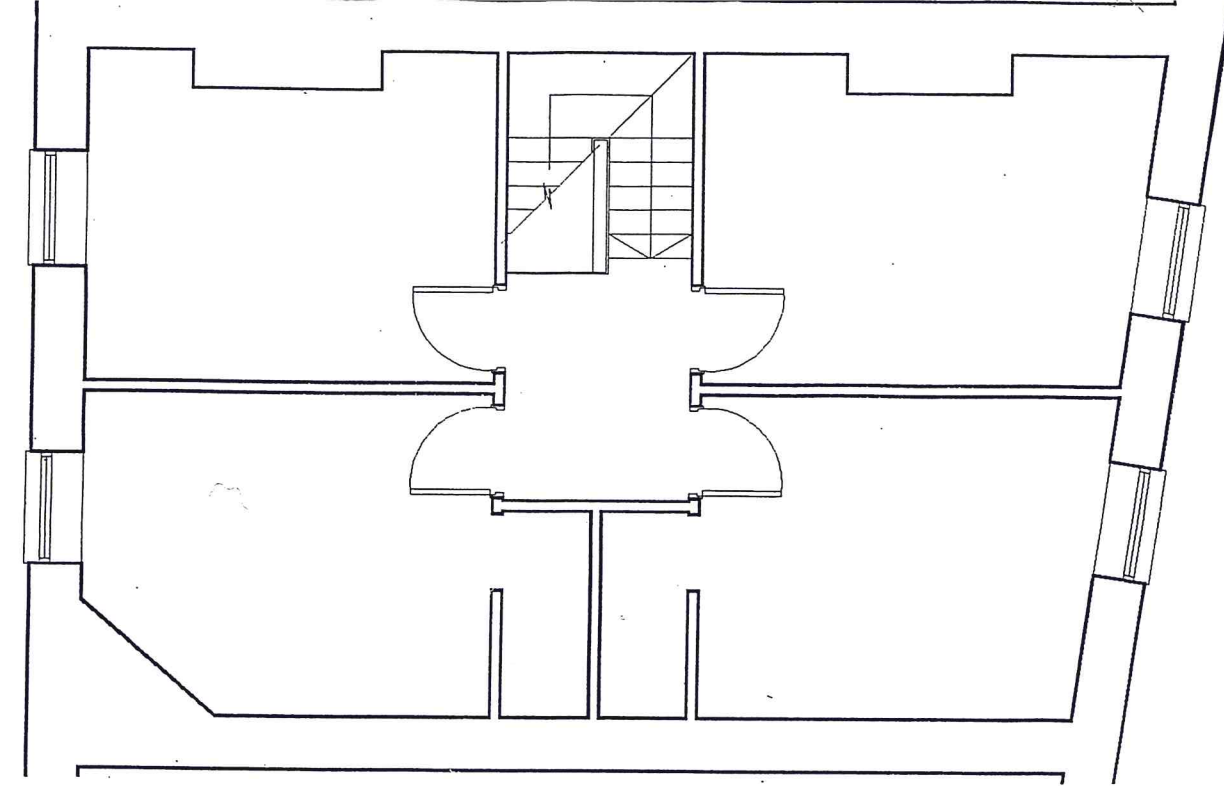
FIRST FLOOR



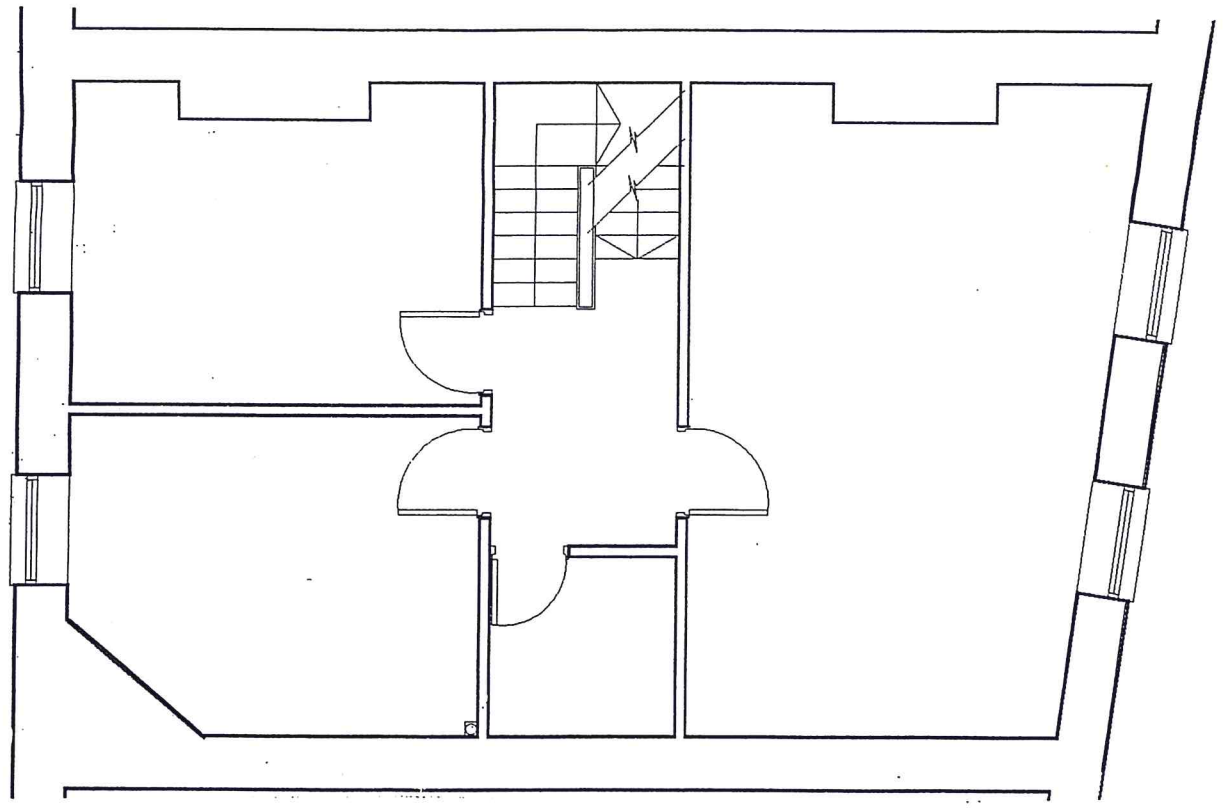
GALERI

4 STRYD Y PLAS
(LLORIAU UCHAF)
MESURAU BRAS YN UNIG

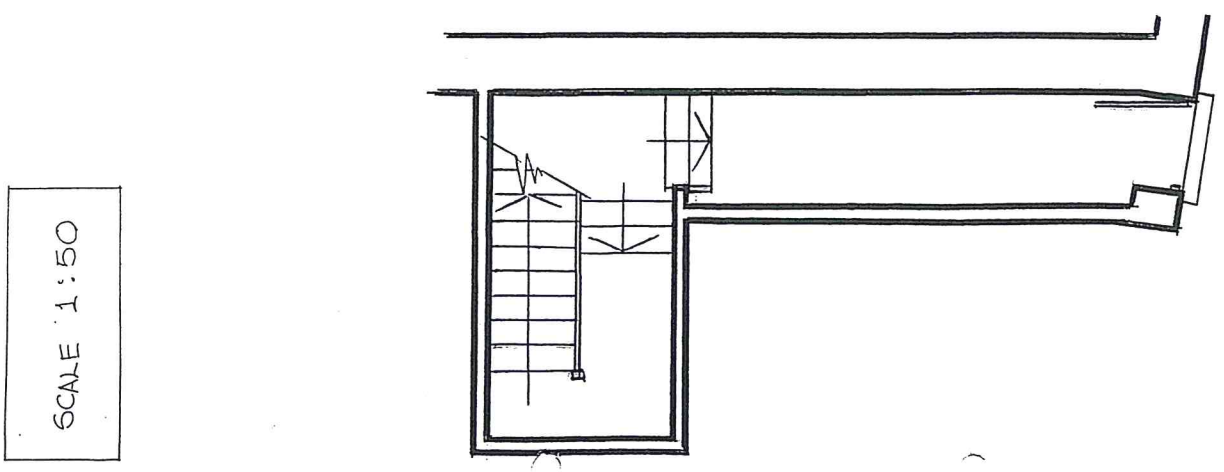
4 PALACE STREET
(UPPER FLOORS)
APPROX. DIMENSIONS ONLY



SECOND FLOOR



FIRST FLOOR



GROUND FLOOR

SCALE 1:50